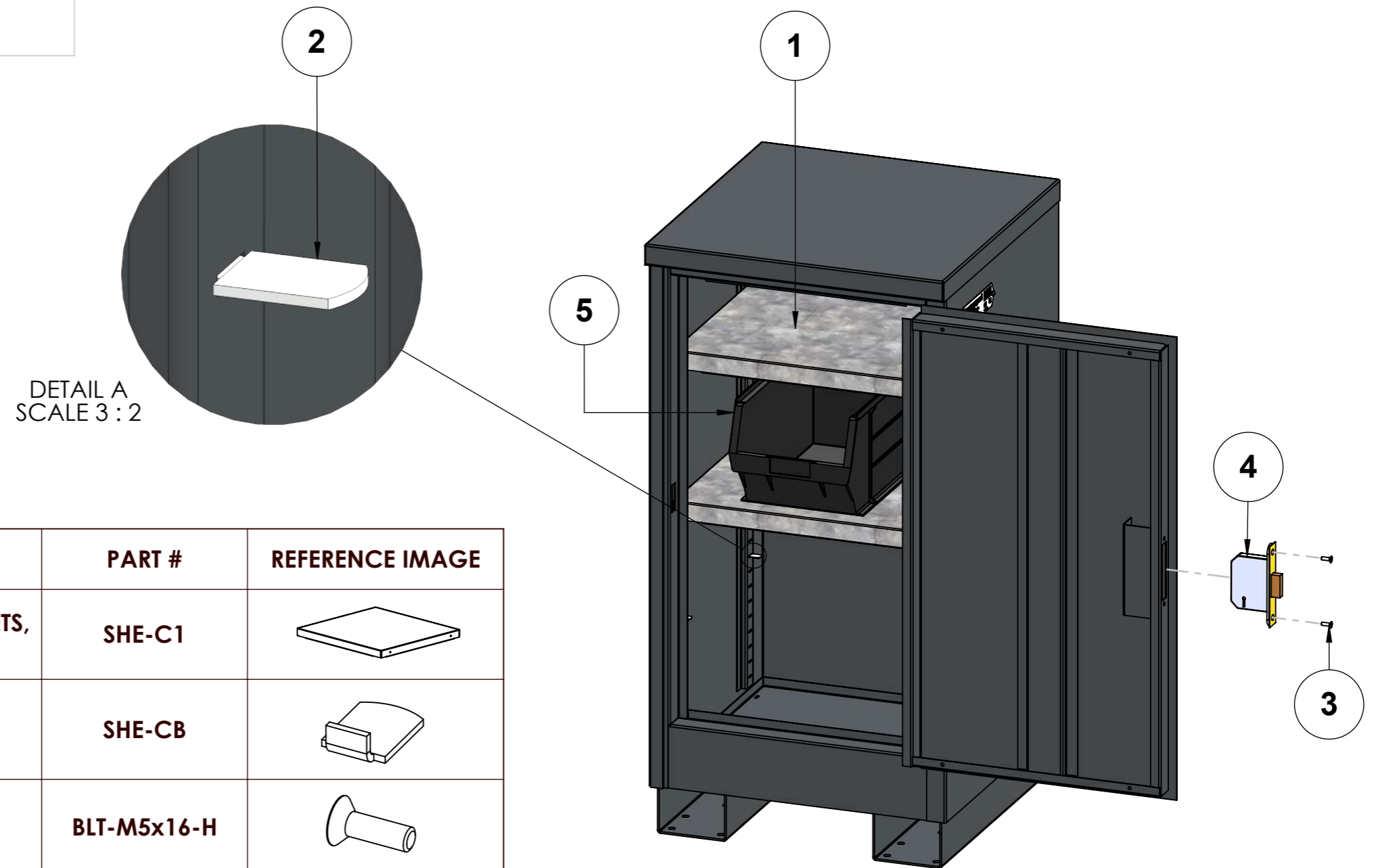


SPARE PARTS GUIDE



ITEM NO.	DESCRIPTION	PART #	REFERENCE IMAGE
1	SHELF - GALVANISED, COMES WITH 4 BRACKETS, FOR TSC1, FSC1	SHE-C1	
2	SHELF - BRACKET SET ONLY, COMES WITH 12 BRACKETS, FOR TSC, FSC, FC RANGES	SHE-CB	
3	BOLT- M5X16 SOCKET COUNTERSUNK SCREW, ZINC PLATED (HIGH TENSILE GRADE 10.9)	BLT-M5x16-H	
4	LOCK - SINGLE 5-LEVER FORTRESS DEADLOCK, COMES WITH 3 KEYS	LOCK-DL1	
5	LIN BIN FOR FC RANGE 205X350X178	FCB	



PRODUCT NAME:
TUFFSTOR CABINET - TSC1

PRODUCT VERSION:
P01

WEIGHT:
50kg

NOTES:

LAST DATE SAVED:

30/10/2024

THIS DRAWING MAY NOT BE COPIED, PUBLISHED OR TRANSMITTED TO A THIRD PARTY WITHOUT THE PRIOR WRITTEN CONSENT OF ARMORGARD LIMITED.

SPARE PARTS GUIDE

PRODUCT COLOUR:
RAL7021 DARK GREY

LEAD TIMES MAY VARY – PLEASE ENQUIRE

PAGE 1 of 1